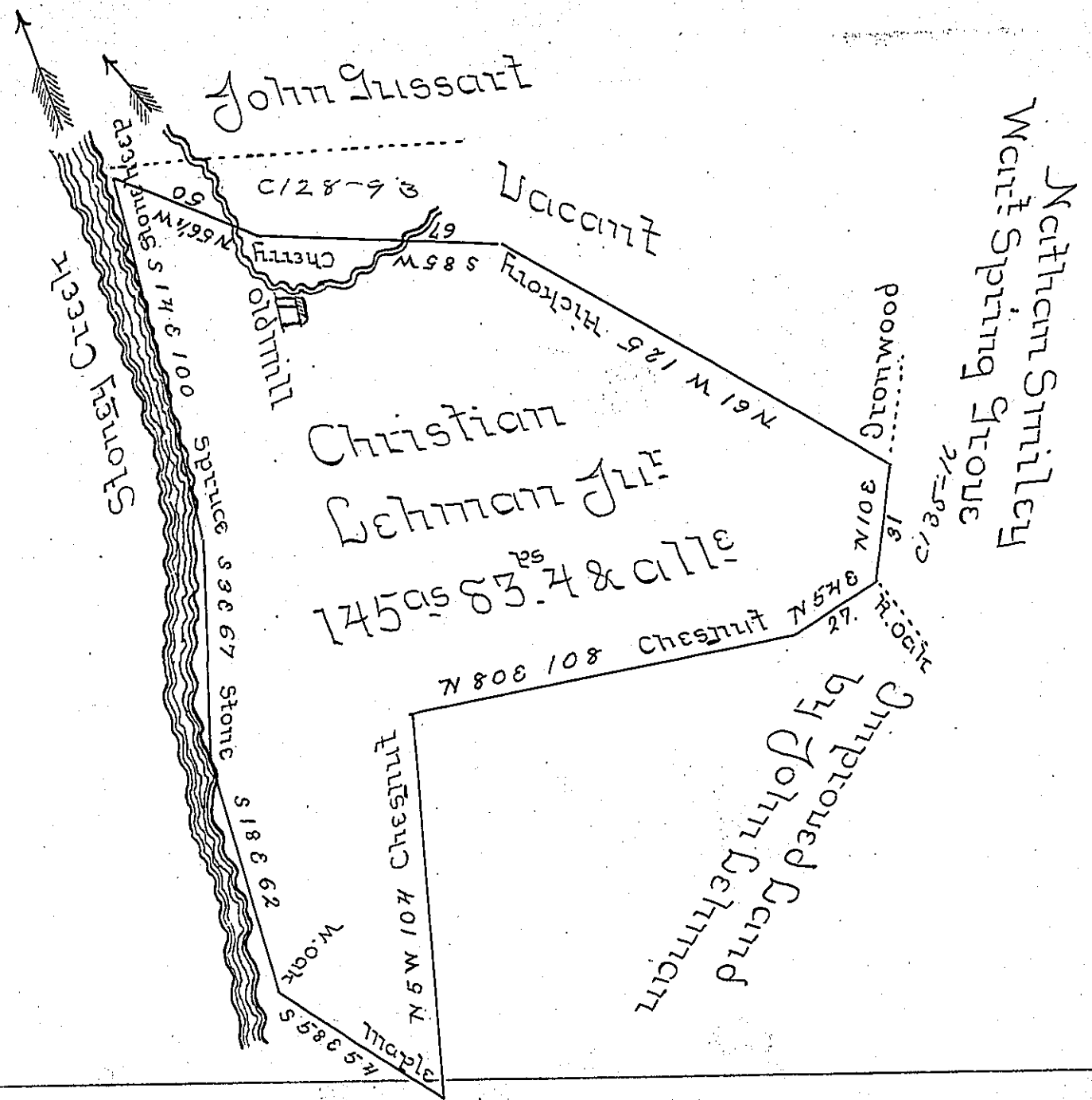


FORM No. 1.



Situate on the East Side of Stony Creek in Conemaugh Township Cambria County Containing one hundred and forty five acres & eighty three perches & all^e Surveyed for Christian Lehman Jr. In pursuance of a Warrant for 175^a granted to said Lehman dated April 4th AD 1827. - Surveyed in pursuance of said warrant on the 16th day of January AD 1828. The Land hath been improved since 1823

To Gab^l: Hiestar Esq^r)
Surveyor General) Stephen Lloyd U.S

IN TESTIMONY that the above is a copy of the original remaining on file in the Department of Internal Affairs of Pennsylvania, made conformably to an Act of Assembly approved the 16th day of February, 1833, I have hereunto set my Hand and caused the Seal of said Department to be affixed at Harrisburg, this seventeenth day of October 1905.

Isaac R. Brown
Secretary of Internal Affairs.